



Nascente Azul

BONITO | MATO GROSSO DO SUL | BRASIL

NASCENTE AZUL: EXCELLENCE IN ECOTOURISM

Nascente Azul (Blue Spring) is an ecotourism complex in Bonito, Mato Grosso do Sul, Brazil, offering a variety of activities to create a deep and unique connection with nature.

The main attraction, which lends its name to the natural park, is **Nascente Azul Floating**, one of the most crystalline springs in the world, where water has a rare tone of turquoise. The snorkeling tour is a unique experience of contemplating underwater natural life, teeming with rich and lush fauna and flora, and a sense of total peace and harmony with nature.



Integrated with the Floating (snorkeling) or available separately for day-use visits, the Nascente Azul Complex is a large area with a **Nature Water Park** that includes a wide range of activities that provide varied contact with nature:

- Running water lake with a Multi-Adventure Circuit and floating water park for all ages;
- Freshwater beach;
- Water Zipline;
- Waterfall of Limestone Tufas for contemplation;
- Forest trails with different levels of difficulty, some with accessibility;
- Natural swimming pool with running water from the spring;
- Decks for access to the lake for bathing;
- Ecumenical chapel and resting area with hammocks;
- Bar and Restaurant;
- Multiple instagrammable places;
- Excellent water quality even on rainy days.



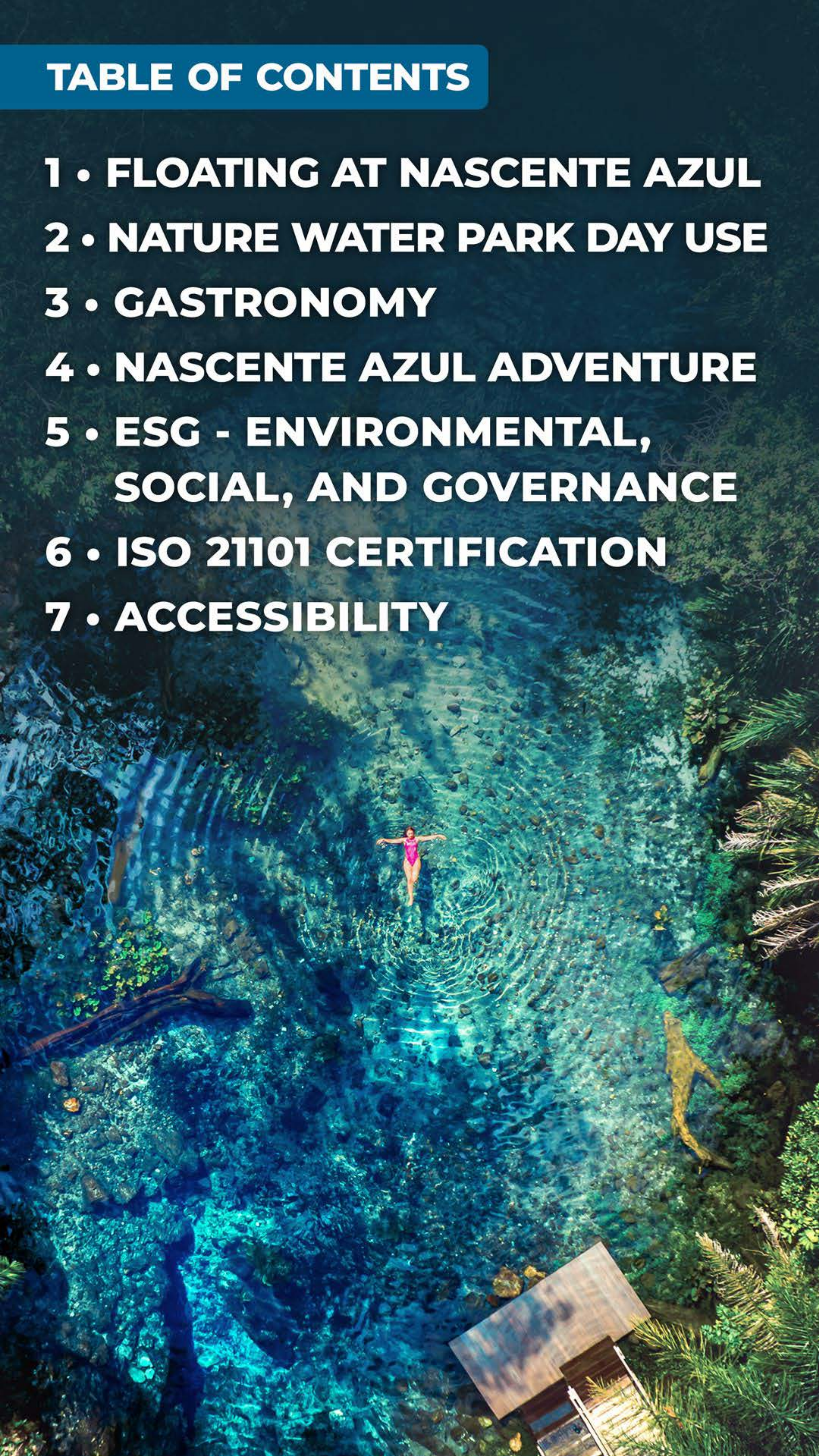
Other attractions include the **Adventure Circuit with the Human Pendulum and the Zipline**, which allow you to fly over the waterfalls and trees of this paradisiacal natural setting!

Nascente Azul is certified by **ABNT** with **ISO 21101**, complying with all safety standards and environmental and social awareness. In 2022, the attraction was certified with the **Green Seal by the Chico Mendes International Institute for Research and Social and Environmental Responsibility** (Inpra). In 2023, it received the **Quality Certificate of the Latin American Quality Institute** for its excellent performance in the comprehensive management of activities, products and services.

This presentation aims to showcase all the activities at Nascente Azul Natural Park, so you can fully enjoy the wonders of Bonito.

TABLE OF CONTENTS

- 1 • FLOATING AT NASCENTE AZUL**
- 2 • NATURE WATER PARK DAY USE**
- 3 • GASTRONOMY**
- 4 • NASCENTE AZUL ADVENTURE**
- 5 • ESG - ENVIRONMENTAL,
SOCIAL, AND GOVERNANCE**
- 6 • ISO 21101 CERTIFICATION**
- 7 • ACCESSIBILITY**



FLOATING AT NASCENTE AZUL



The Bonito region is known worldwide for its crystal-clear waters. The Blue Spring (Nascente Azul), recognized as one of the most crystalline springs in the world, was named after the phenomenon of spreading, which creates an incredible turquoise blue hue in its waters. The Floating tour takes place on the Nascente Azul River, where the water has visibility of up to 60 meters and maintains a constant temperature of 24°C (75°F) throughout the year. The entire activity is carried out in groups led by an accredited guide, a specialist in the attraction.



WATERFALL OF LIMESTONE TUFAS

The experience begins with a contemplative trail of about 300 meters, accessible and elevated from the ground. On this trail, as well as exploring abundant fauna and flora, visitors come across spectacular scenery, such as an extensive waterfall of limestone tufas that spreads out in the form of a veil, filling large natural formations.



FLOATING

WILDLIFE COMTEMPLETION DURING THE TRAIL

Then there's preparation for the activity, when visitors receive wetsuits, a life jacket, a diving mask, snorkel and water shoes, all of which are included in the price of the tour. Although it's not mandatory to use a wetsuit, it contributes to greater floatability and thermal insulation on colder days. Using the full equipment guarantees a perfect experience, and you don't need to know how to swim to be able to float.





FREEDIVING AT THE SPRING

After training on a specific deck of the river, the group is taken to the spring. There you can contemplate the views and, for those who wish, you can perform freediving (apnea diving) in the cleft, which goes seven meters deep.



NASCENTE AZUL RIVER

UNPARALLELED CRYSTALLINE AND GENTLE WATERS

Then, the floating begins in a fluid and calm way. The Nascente Azul River, broad and gently flowing, offers a unique opportunity for serene contemplation, providing immersive encounters with nature's intricate details. This trait also brings a sense of peace and safety to those unfamiliar with this type of activity, while making it accessible to children, the elderly and people with disabilities.



FLOATING

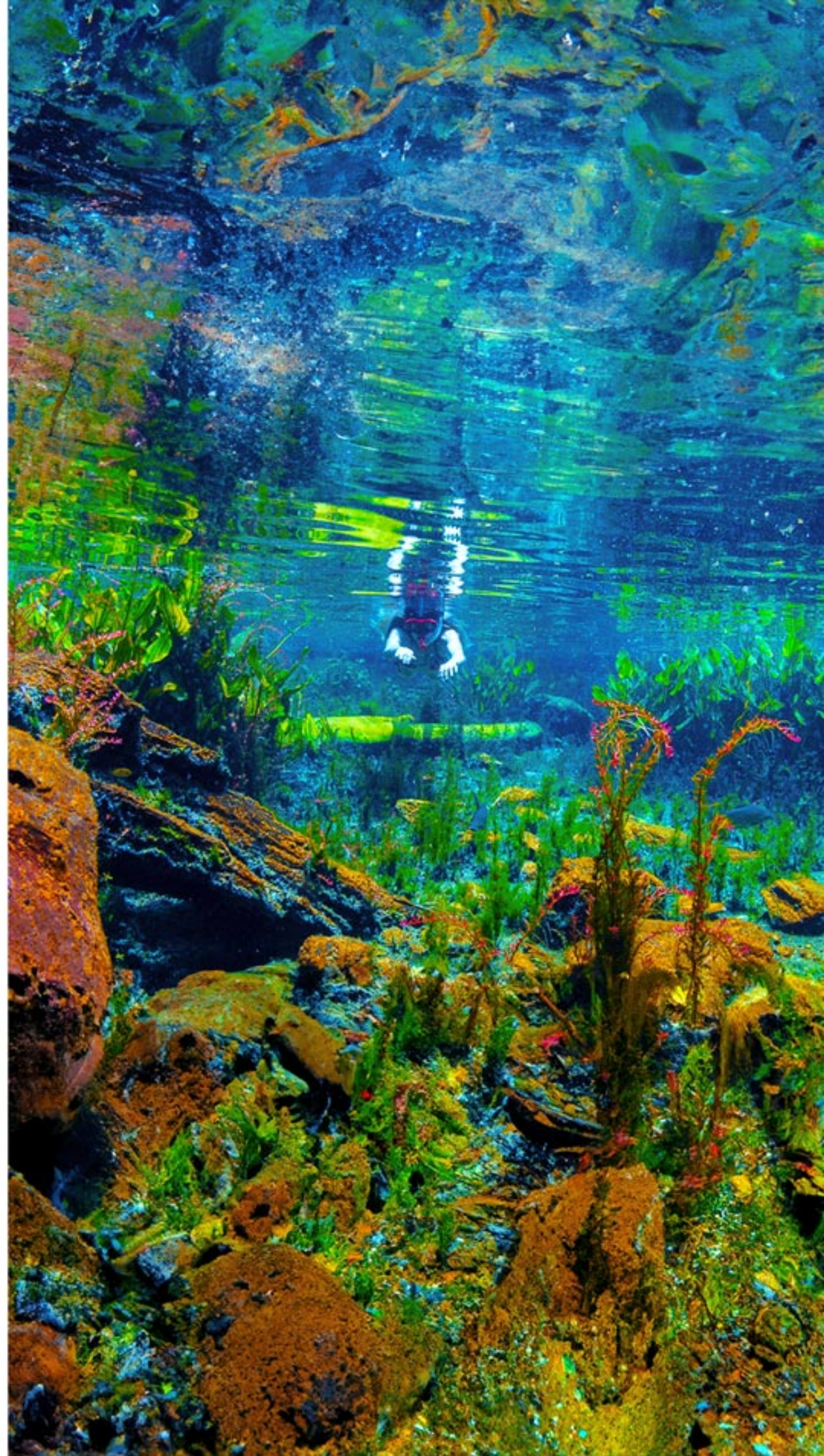
A VARIETY OF COLORS IN UNDERWATER GARDENS



All along the floating route, visitors feel an incredible sense of peace and immersion in the lushness of nature, spotting swarms of varied species of fish, an abundant variety of aquatic plants and incredible corridors of underwater vegetation teeming with life and color.

Once the activity is completed, the group is taken back to the attraction's headquarters and is free to enjoy all the attractions of Nascente Azul's Nature Water Park for the rest of the day. Day use at the Nature Water Park is included in the floating.





FLOATING
A DAZZLING DISPLAY OF UNDERWATER LIFE



**CLICK AND WATCH A
VIDEO OF THE FLOATING**

NASCENTE AZUL NATURE WATER PARK



Nascente Azul's Nature Water Park is a truly special place, full of diverse attractions that go beyond simple entertainment, providing deep forms of contact with the typical nature of Bonito.

Embracing most of the complex, the Nature Water Park has two lakes: one has the fun and diverse Multi-Adventure Circuit an Inflatable Water Circuit and a freshwater beach, and the other named Lago Pantanal, which is a unique opportunity among the local attractions, where you can contemplate the Pantanal biome, with its birds, aquatic animals and vegetation, which would normally only be found kilometers away from Bonito. This site, among others in the park, is ideal for birdwatching.

On top of these attractions, there is also an ecological pool with running water, a waterfall, contemplative decks, a court for beach tennis, a hammock area, and an ecumenical chapel. Explore our self-guided trail circuit to discover the majestic waterfall of limestone tufas, capture stunning photos on a picturesque, flowered swing or from elevated lookouts, wander through lush fig tree groves, ascend a hill for a breathtaking telescope view of Serra da Bodoquena (Bodoquena Hills), and soar to new heights at the Arara Lookout.



MULTI-ADVENTURE CIRCUIT

CIRCUIT OF SUSPENDED BRIDGES



MULTI-ADVENTURE CIRCUIT
WATER ZIPLINE



INFLATABLE WATER CIRCUIT

FLOATS



FRESHWATER BEACH
SHALLOW AND SAFE DEPTH



PANTANAL LAKE

LOOKOUTS FOR CONTEMPLATION



PANTANAL LAKE
A SPECTACLE FOR BIODIVERSITY



TRAIL OF THE WATERFALL

WITH A BEAUTIFUL, INSTAGRAMMABLE FLOWER SWING



WATERFALL LOOKOUT

TOP VIEW OF THE TUFAS WATERFALL

TRAIL OF THE LUNETTA LOOKOUT

WITH A SPLENDID VIEW OF SERRA DA BODOQUENA



TRAIL OF THE ARARA LOOKOUT

INSTAGRAMMABLE SPOT WITH BEAUTIFUL LANDSCAPE





TRAIL OF THE FIGS

A PATH WITH GRANDIOSE FIG TREES

NATURAL SWIMMING POOL

WITH WATERS COMING STRAIGHT FROM THE SPRING





CONTEMPLATIVE DECKS
MORE CONVENIENCE AND COMFORT

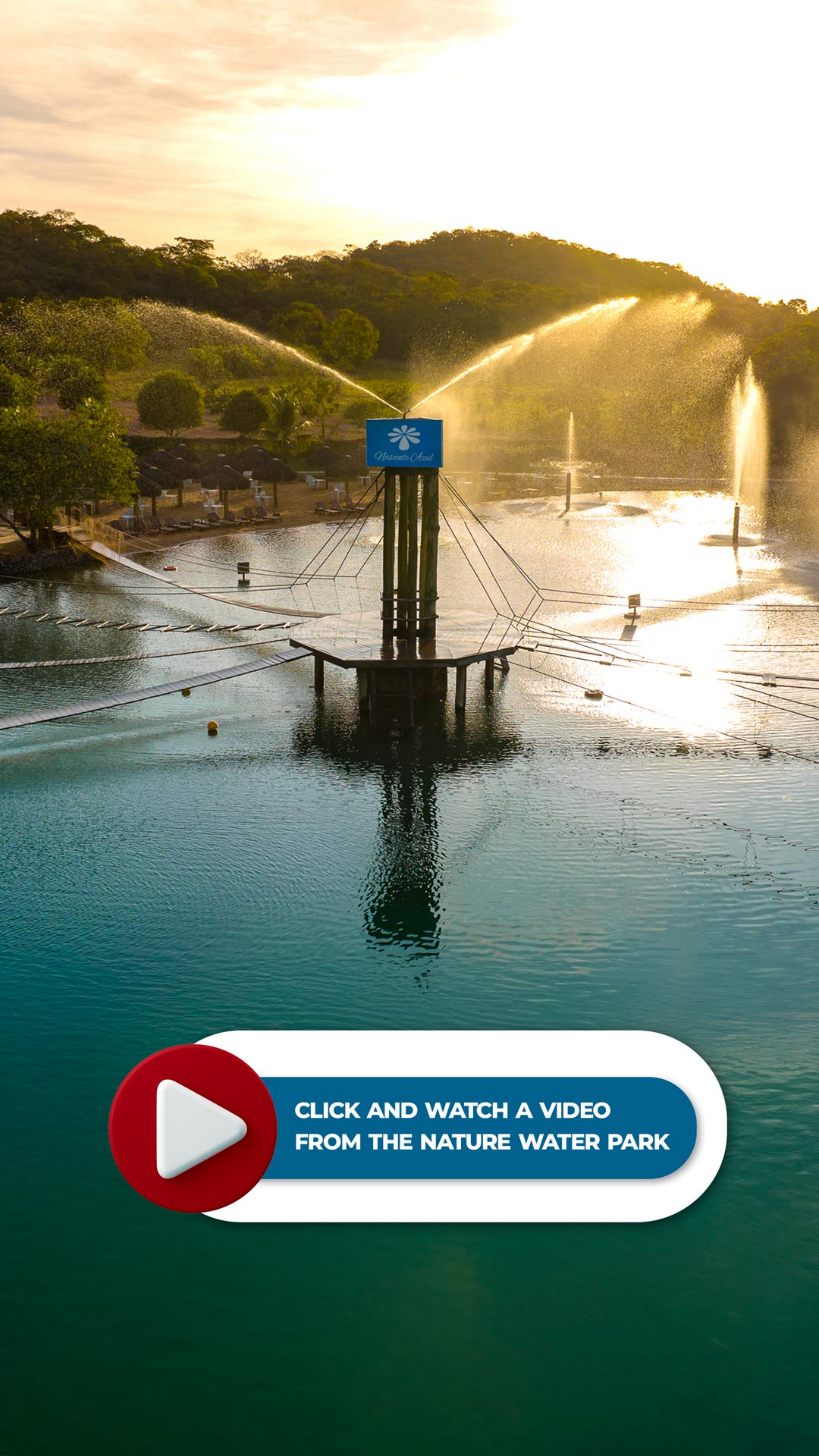


JECA WATERFALL
DELIVERS AN INVIGORATING MASSAGE



ECUMENICAL CHAPEL

*DEDICATED TO SINHÔZINHO, A RENOWNED
FIGURE TO THE LOCAL CULTURE*



**CLICK AND WATCH A VIDEO
FROM THE NATURE WATER PARK**

NATURE WATER PARK: COMITIVA RESTAURANT



Comitiva Restaurant, located in the Nature Water Park, is run by prestigious chef Sylvio Trujillo, a specialist in the authentic cuisine of Mato Grosso do Sul. Lunch, a self-service buffet, can be purchased on site or in advance at an agency in Bonito, along with any of the activities.

The buffet is suitable for different tastes and includes meat, pasta and salads, as well as vegan options and typical local desserts.



NATURE WATER PARK: COMITIVA BAR



At the Comitiva Bar, close to the freshwater beach, you can enjoy a variety of drinks and portions specially prepared to complement your experience, with the convenience of waiting staff.

Our drinks are created with fresh and selected ingredients, ensuring an explosion of flavors. And to accompany them, special portions are prepared to order and are perfect for sharing with friends and family.





**CLICK AND WATCH A
VIDEO OF OUR CUISINE**



NASCENTE AZUL ADVENTURE



Nascente Azul Adventure is a mix of activities centered on adventure, perfect for those looking for an extra dose of adrenaline while in contact with Bonito's nature. The Zipline and Human Pendulum practices take place in a 20-meter-high multi-adventure metal tower, meticulously designed to allow a breathtaking view of Serra da Bodoquena and focused on safety.



ADVENTURE

450-METER SUSPENDED ZIPLINE

At the top of the tower is the starting point for the zipline, an adventure activity for all ages that doesn't require intense physical effort. Equipped with the appropriate equipment, visitors slide down a 450-meter course on steel cables, experiencing the unique feeling of flying over the waterfall and the trees that form this paradisiacal natural setting.

Just imagine this thrill in the company of your loved ones: yes, up to two people can make the journey at the same time, as long as their total weight doesn't exceed 120 kg. For greater comfort, speed limiters (rear parachute) can be used.

Do you want a cool hint? The tower is located near the changing rooms of the Floating and the zipline's arrival point is in the Nature Water Park. One activity after the other enhances the experience, and you can quickly cool off in the lake, the pool, or enjoy a delicious lunch.





ADVENTURE

THE EXCITING HUMAN PENDULUM

The Human Pendulum literally defies the limits of gravity. It is located on the side of the multi-adventure metal tower and was designed to provide a lot of excitement through a series of controlled descents and ascents in a pendulum format.

The participant is connected by safety equipment and raised to a height of up to 12 meters. When they indicate they are comfortable with the altitude reached, the instructor triggers the mechanism that starts a thrilling swing. This feels like defying the limits of gravity and provides a great adrenaline rush.

Just like the zipline, the Human Pendulum equipment is located in the same area as the floating activity, and it is common for visitors to choose this experience right after enjoying our crystal-clear waters.





**CLICK AND WATCH A
VIDEO FROM ADVENTURE**



Good ESG (Environmental, Social and Governance) practices involve constant evaluation and effective action by the corporation regarding the social and environmental factors linked to its business. We are a great example of how commitment to the environment can result in meaningful and lasting transformations.

Nascente Azul is wonderful proof that it is possible to use the best that nature has to offer without destroying it. In 2008, we began an intense environmental recovery project in the area, which had been severely degraded.



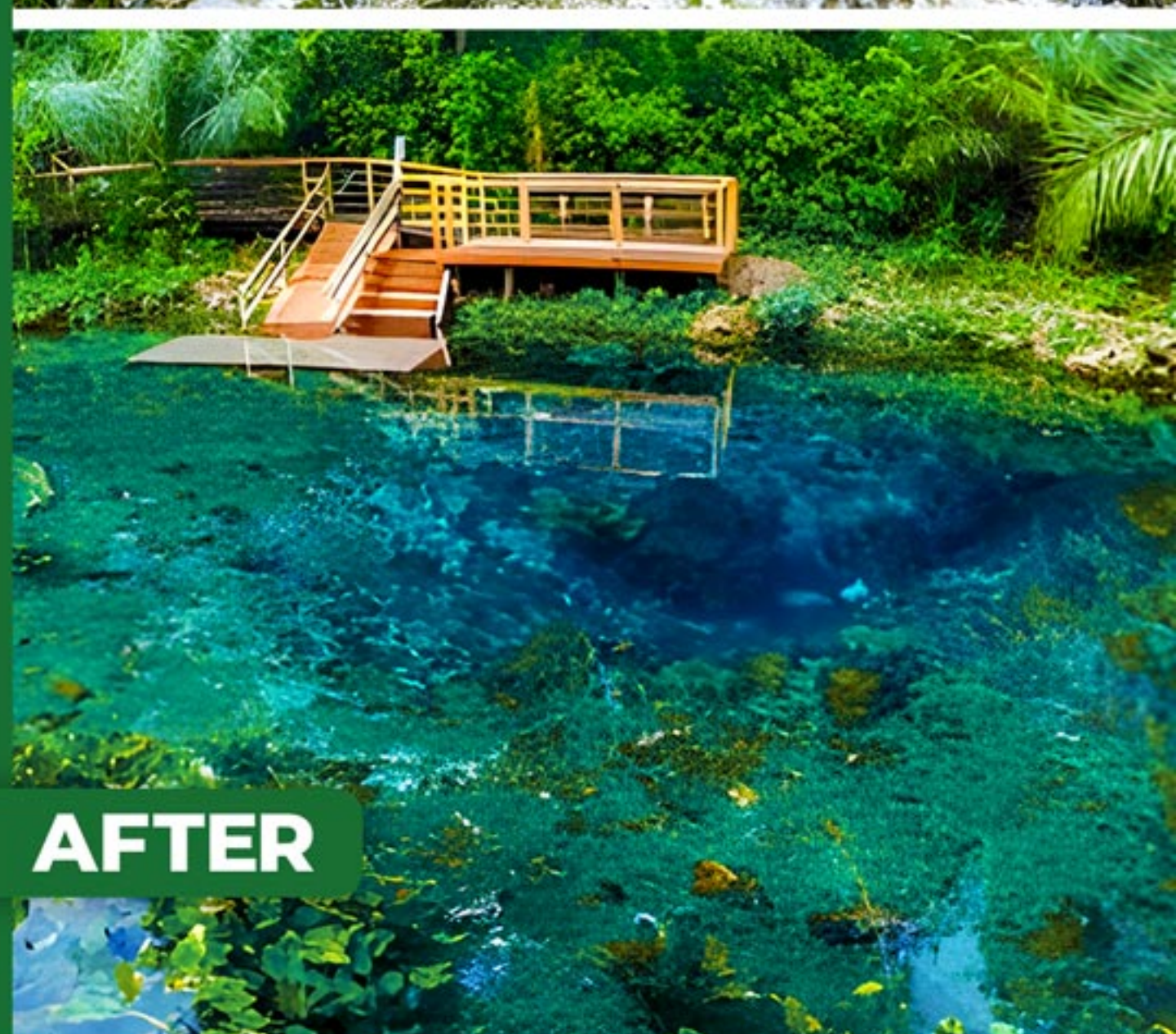
BEFORE



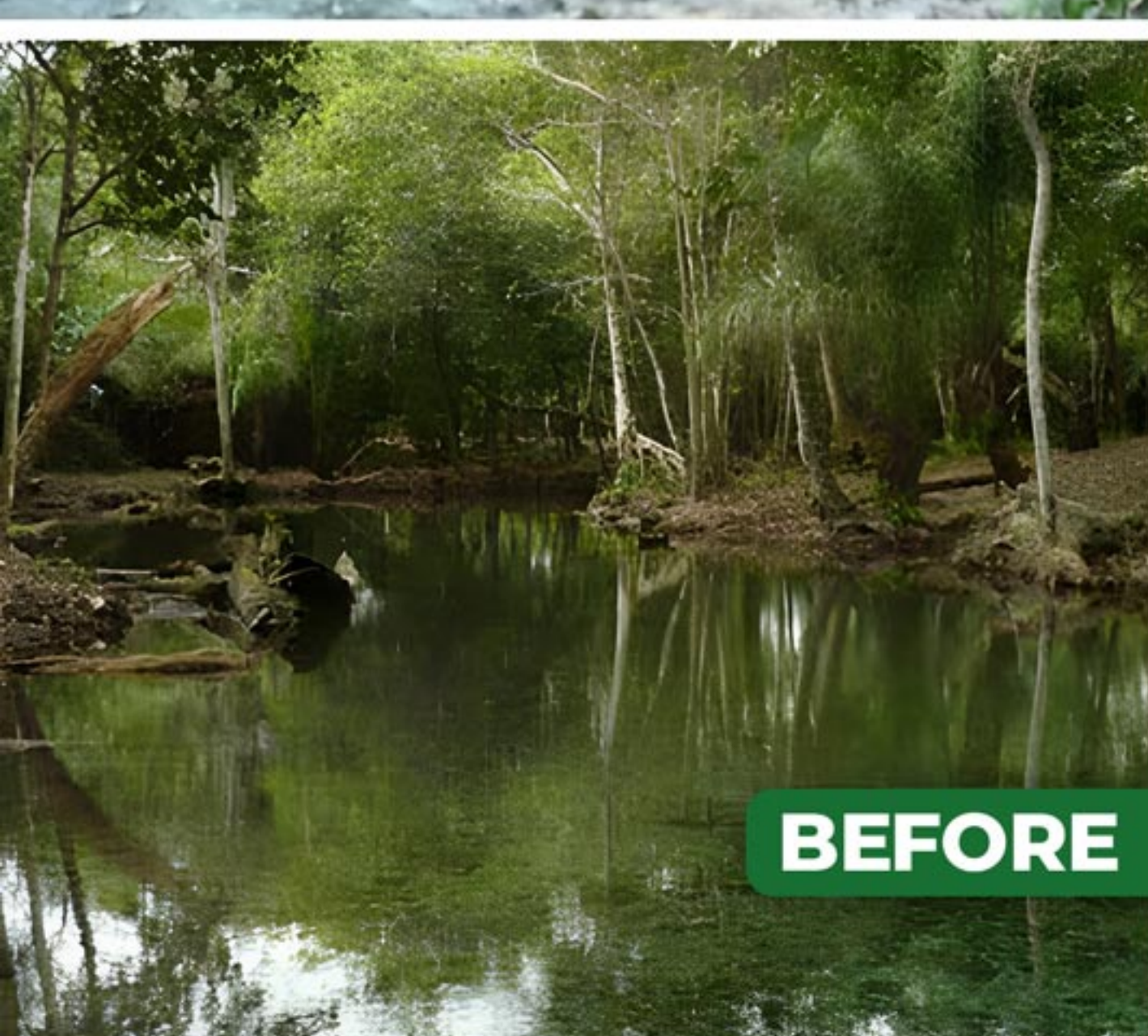
AFTER



BEFORE



AFTER



BEFORE



AFTER



BEFORE



AFTER



LATIN AMERICAN
QUALITY INSTITUTE

Ever since our foundation, we have maintained a non-negotiable commitment to environmental preservation and sustainability. As well as adopting a range of good practices in our use of natural resources, we try to promote environmental education through activities with public schools. For more than 15 years, we have also been involved in preservation and management actions here at Nascente Azul, all to guarantee that future generations will enjoy Bonito's natural beauty.

In 2022, we were the first attraction in Bonito to receive the Green Seal certification from the Chico Mendes International Institute for Research and Socio-Environmental Responsibility (INPRA), which is internationally recognized and validated by the United Nations.

This certification is granted to institutions that seek continuous sustainability in their business, using natural resources in full compliance with current legislation.

In 2023, we received the Quality Certificate of the Latin American Quality Institute (LAQI) for our excellent performance in the comprehensive management of activities, products and services. LAQI is authorized to issue ESG certifications within the concept of Total Responsibility established through the Latin American Excellence Model. These certifications are recognized in more than 100 countries by mutual cooperation agreements.

This Green Seal from Chico Mendes Institute and the LAQI Quality Certificate reinforce our ongoing commitment to the environment and the local community, while they also challenge us to find even more efficient and innovative solutions.

ISO 21101



Safety is a fundamental and key factor in the experience offered to visitors by Nascente Azul. The attraction is certified by the international standard ISO 21101 in the Safety Management System for adventure tourism practices.

To ensure visitors' peace of mind, Nascente Azul has insurance for all its activities, and all its staff are trained and certified by the relevant authorities.

Our concern for accessibility reflects our commitment to extending ecotourism activities to everyone, including children, the elderly and people with disabilities, while providing safer and more comfortable facilities for visitors.



ISO 21101

Nascente Azul is committed to the safety of its participants by means of the following points:

- **Legislation:** compliance with environmental, tourist, labor and applicable safety standards.
- **Responsible tourism:** promoting responsible adventure tourism applying rules of conscious behavior in natural environments.
- **Accessibility:** providing conditions for people with disabilities, reduced mobility and elderly people to carry out activities safely.
- **Satisfaction:** meeting customer expectations, ensuring satisfaction with the provided services, and safety during activities.
- **Continuous improvement:** commitment to the constant improvement of performance in ecotourism and adventure tourism.
- **Data protection:** adoption of measures to comply with the General Data Protection Law, ensuring security in the processing of personal data, including sensitive data.

ACCESSIBILITY



Nascente Azul has a genuine commitment to accessibility and believes it has a duty to extend ecotourism activities to everyone, including the elderly, children and people with reduced mobility. As a result, our facilities are designed to provide safety and comfort for visitors, allowing an authentic experience of contact with nature, regardless of age or any physical or intellectual limitations.

Nascente Azul's infrastructure was planned to facilitate access for everyone who needs it, with adaptations for People with Disabilities (PwD), such as tactile trails, ramps, amphibious chair, support cars, accessible decks, adapted toilets and trained staff. During the floating activity, trained guides and monitors are available to accompany visitors who need special attention.



ACCESSIBILITY

SAFE TRAILS AND TRAINED STAFF





**CLICK AND WATCH A
VIDEO OF ACCESSIBILITY**



Nascente Azul

**EXCELLENCE IN
ECOTOURISM**

RODOVIA BONITO BODOQUENA KM 29
BONITO, MATO GROSSO DO SUL

+55 67 3255-2297

+55 67 3255-1496 (WHATSAPP)

CONTATO@NASCENTEAZUL.COM.BR

NASCENTEAZUL.COM.BR



Tripadvisor
Travellers'
Choice Awards

